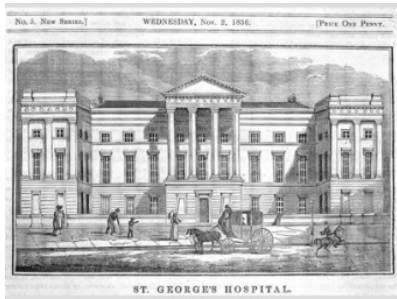


# PBM Accreditation: Who Wants It? Who Needs It?



James Uprichard  
**Consultant Haematologist**  
The Centre for Haemostasis and Thrombosis  
**St George's Hospital**  
[j.uprichard@nhs.net](mailto:j.uprichard@nhs.net)



# Disclosures

- Employee:
  - Nothing to declare
- Stockholder:
  - Nothing to declare
- Scientific advisory boards:
  - Bayer, Leo Pharma, Vifor Pharma, Portola, Octapharma, Pharmacosmos
- Speaker bureau:
  - Bayer, Pfizer, Bristol-Myers Squibb, Octapharma, Shire, Vifor Pharma, Daiichi-Sankyo
- Clinical trials:
  - Portola, Bayer, Boehringer-Ingelheim, Baxalta, Daiichi-Sankyo
- Travel support:
  - Bayer, Baxter, Pfizer, Pharmacosmos

# Disclosures

Haematologist



# Disclosures

Haematologist

Member of National Blood Transfusion Committee PBM working group



# Disclosures

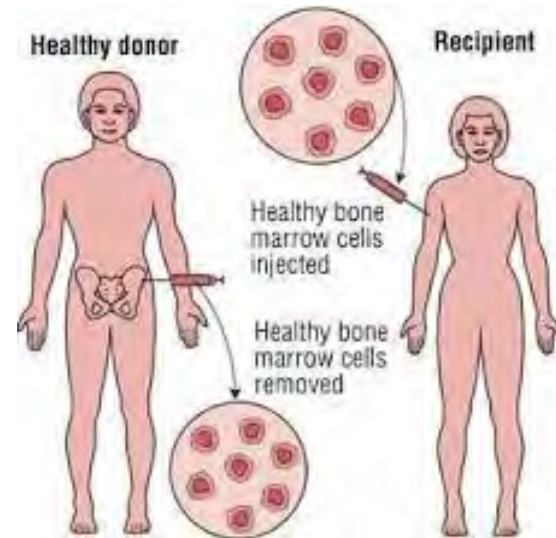
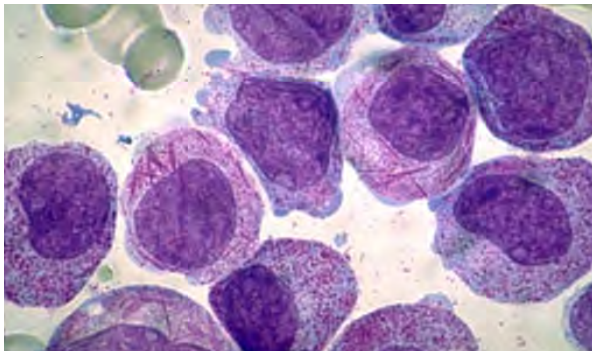
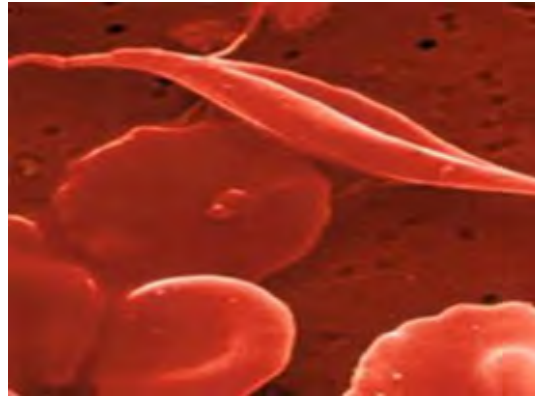
Haematologist

Member of National Blood Transfusion Committee PBM working group

Co-chair of PBM self-assessment group



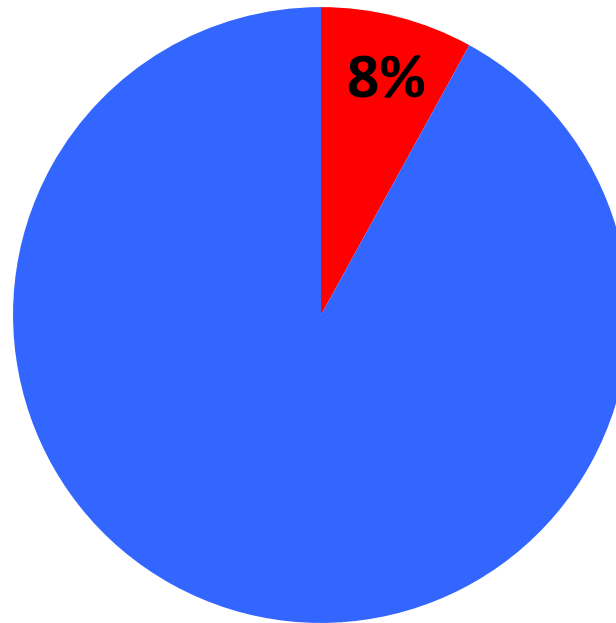








# 2018 Survey of Patient Blood Management



**Jayne Addison**

*Patient Blood Management Practitioner*

NHS Blood and Transplant/Serious Hazards of Transfusion

**Brian Hockley**

*Data Analyst and Audit Manager*

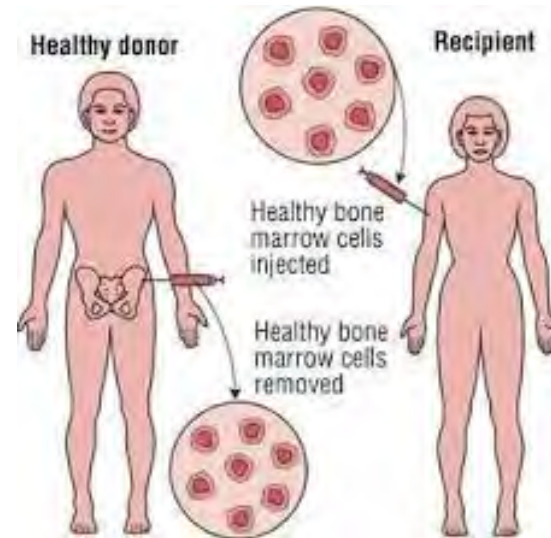
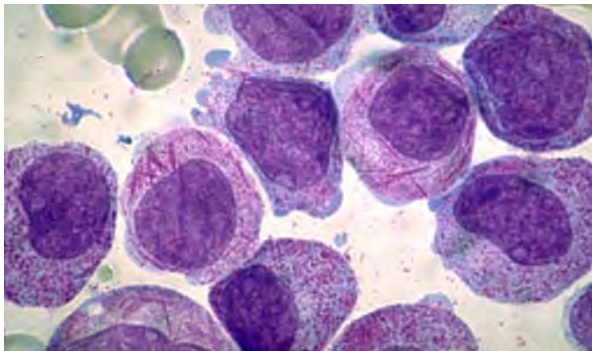
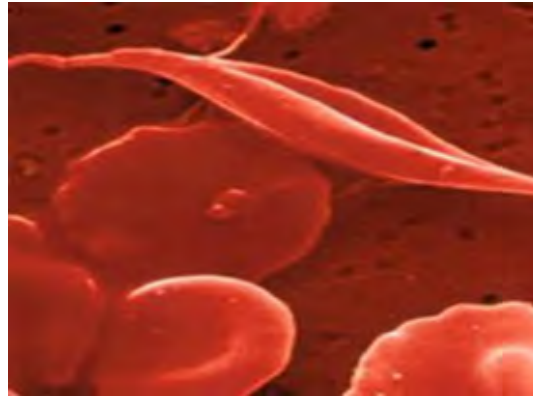
NHS Blood and Transplant/Serious Hazards of Transfusion

**Louise Sherliker**

*National Lead*

Patient Blood Management Practitioner Team

NHS Blood and Transplant





# PATIENT BLOOD MANAGEMENT

PRE	<ul style="list-style-type: none"> <li>• Detect anemia</li> <li>• Identify underlying disorder(s) causing anemia</li> <li>• Manage disorder(s)</li> <li>• Refer for further evaluation if necessary</li> <li>• Treat suboptimal iron stores/iron deficiency/anemia of chronic disease/iron-restricted erythropoiesis</li> <li>• Treat other hematinic deficiencies</li> <li>• Note: Anemia is a contraindication for elective surgery</li> </ul>	<ul style="list-style-type: none"> <li>• Identify and manage bleeding risk</li> <li>• Minimize iatrogenic blood loss</li> <li>• Procedure planning and rehearsal</li> <li>• Preoperative autologous blood donation (in selected cases or when patient choice)</li> </ul>	<ul style="list-style-type: none"> <li>• Assess/optimize patient's physiological reserve and risk factors</li> <li>• Compare estimated blood loss with patient-specific tolerable blood loss</li> <li>• Formulate patient-specific management plan using appropriate blood conservation modalities to minimize blood loss, optimize red cell mass and manage anemia</li> <li>• Restrictive transfusion thresholds</li> </ul>
INTRA	<ul style="list-style-type: none"> <li>• Timing surgery with hemotological optimization</li> </ul>	<ul style="list-style-type: none"> <li>• Meticulous hemostasis and surgical techniques</li> <li>• Blood-sparing surgical techniques</li> <li>• Anesthetic blood conserving strategies</li> <li>• Autologous blood options</li> <li>• Pharmacological/hemostatic agents</li> </ul>	<ul style="list-style-type: none"> <li>• Optimize cardiac output</li> <li>• Optimize ventilation and oxygenation</li> <li>• Restrictive transfusion thresholds</li> </ul>
POST	<ul style="list-style-type: none"> <li>• Stimulate erythropoiesis</li> <li>• Be aware of drug interactions that can increase anemia</li> </ul>	<ul style="list-style-type: none"> <li>• Vigilant monitoring and management of postoperative bleeding</li> <li>• Avoid secondary hemorrhage</li> <li>• Rapid warming/maintain normothermia (unless hypothermia specifically indicated)</li> <li>• Autologous blood salvage</li> <li>• Minimize iatrogenic blood loss</li> <li>• Hemostasis/anticoagulation mgmt</li> <li>• Prophylaxis of upper GI hemorrhage</li> <li>• Avoid/treat infections properly</li> <li>• Be aware of adverse effects of medication</li> </ul>	<ul style="list-style-type: none"> <li>• Optimize anemia reserve</li> <li>• Maximize oxygen delivery</li> <li>• Minimize oxygen consumption</li> <li>• Avoid/treat infections promptly</li> <li>• Restrictive transfusion thresholds</li> </ul>

Multidisciplinary multimodal team approach



# ***Blood and Transplant***



# PBM

Optimising and maintaining the patient's own blood in order to reduce the likelihood of a transfusion being required



# Transfusion reactions

## Acute:

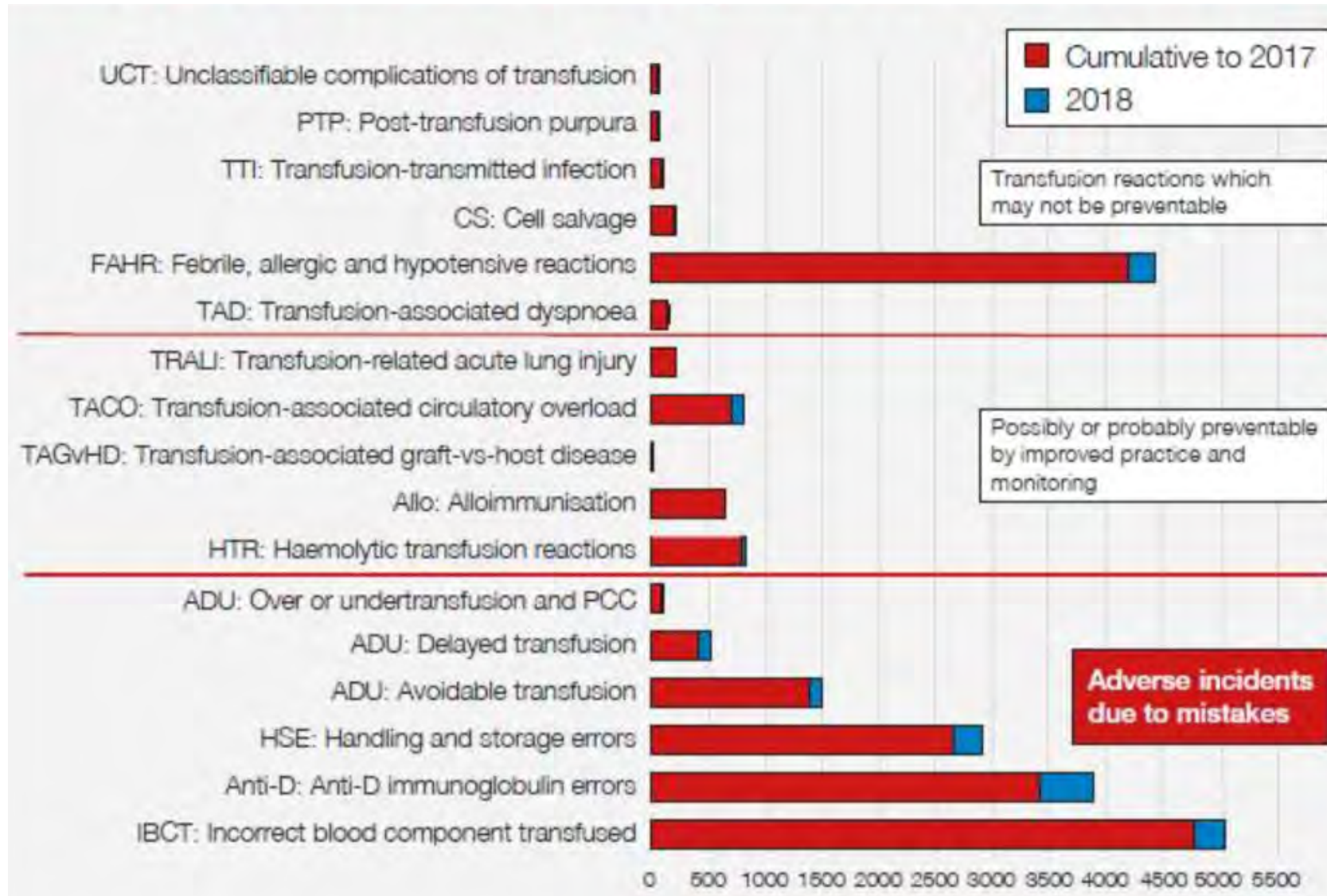
- Acute haemolytic
- Febrile non-haemolytic
- Urticarial
- Anaphylactic
- TRALI
- TACO
- Acute hypotensive

## Delayed:

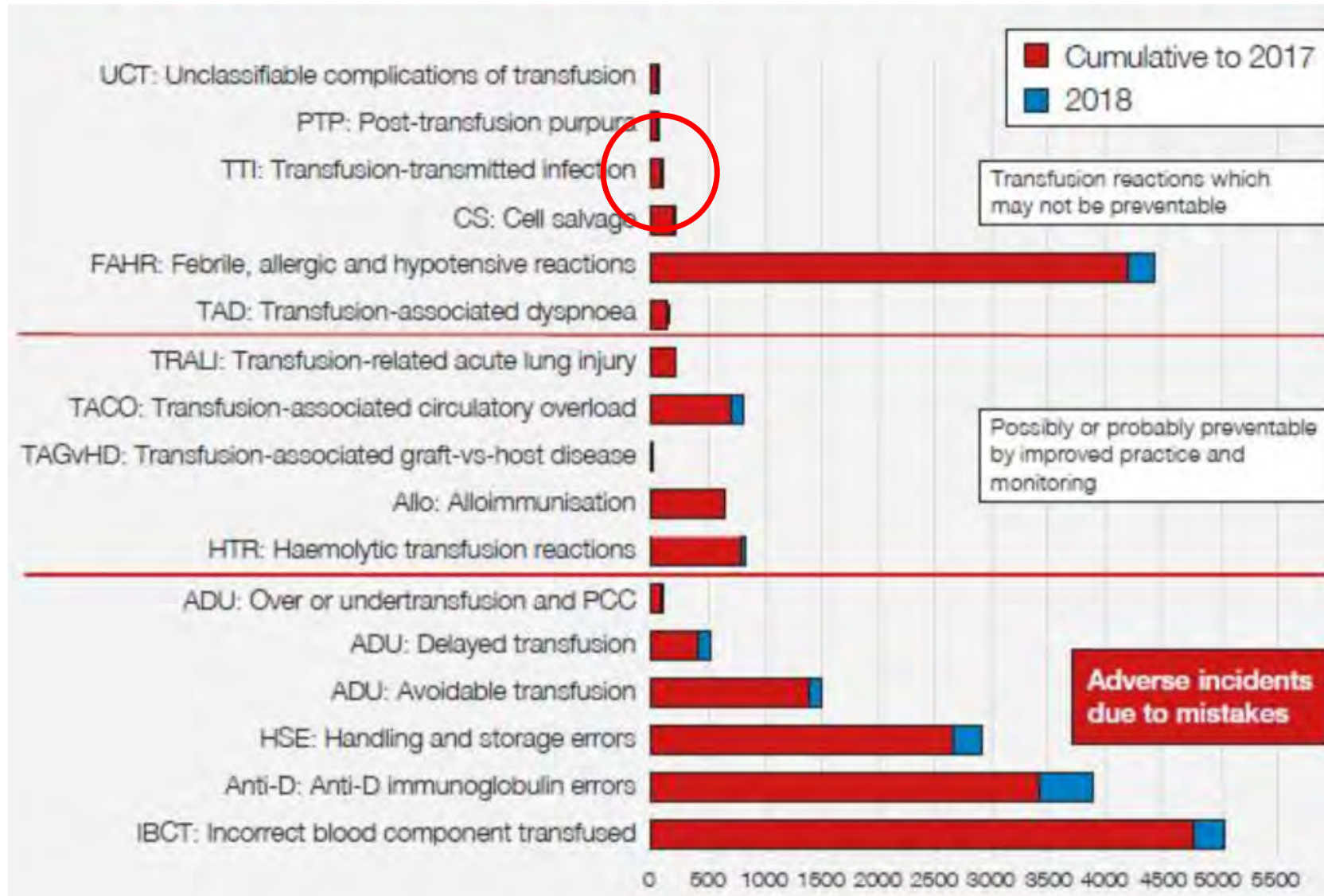
- Delayed haemolytic
- Post-transfusion purpura
- Graft versus host disease
- Iron overload
- Transmission of infectious diseases



# SHOT DATA 1996 – 2018 (n=21474)



# SHOT DATA 1996 – 2018 (n=21474)



# PBM

Optimising and maintaining the patient's own blood in order to reduce the likelihood of a transfusion being required



















**MEDICAL DIRECTIVE**  
(signed document inside)

**NO BLOOD**

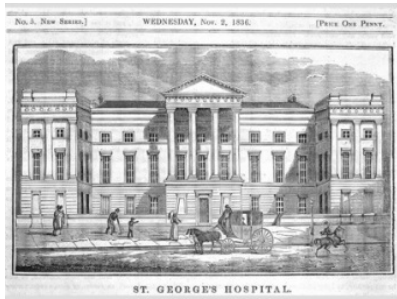








# PBM Accreditation: Who Wants It? Who Needs It?



James Uprichard  
**Consultant Haematologist**  
The Centre for Haemostasis and Thrombosis  
**St George's Hospital**  
[j.uprichard@nhs.net](mailto:j.uprichard@nhs.net)

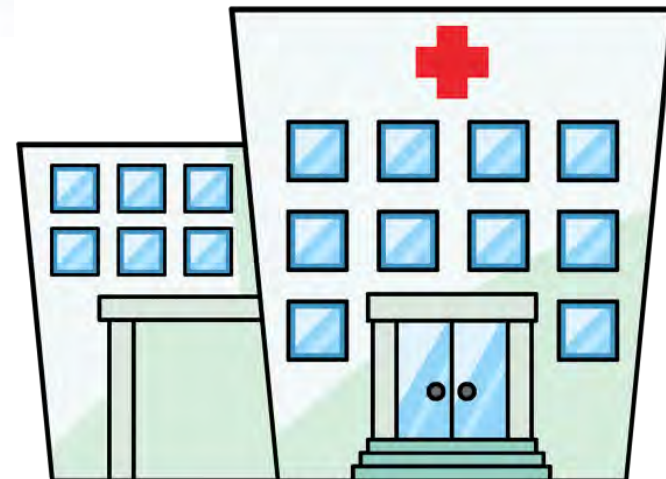


# Why have an accreditation system?













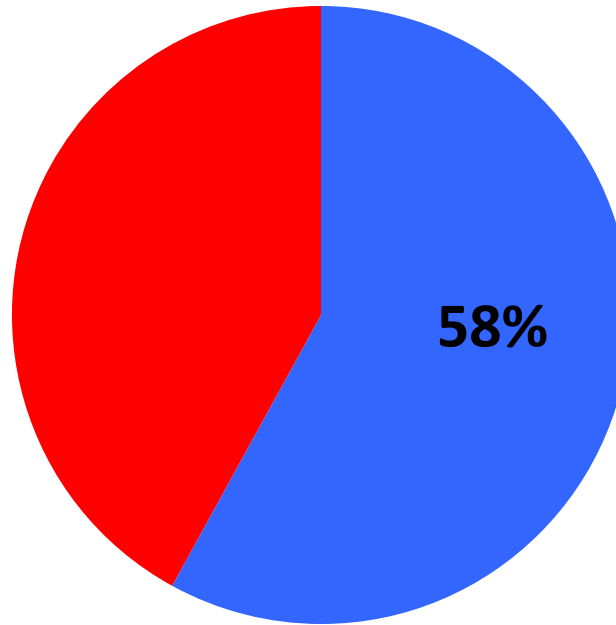








# 2018 Survey of Patient Blood Management



**Jayne Addison**

*Patient Blood Management Practitioner*

NHS Blood and Transplant/Serious Hazards of Transfusion

**Brian Hockley**

*Data Analyst and Audit Manager*

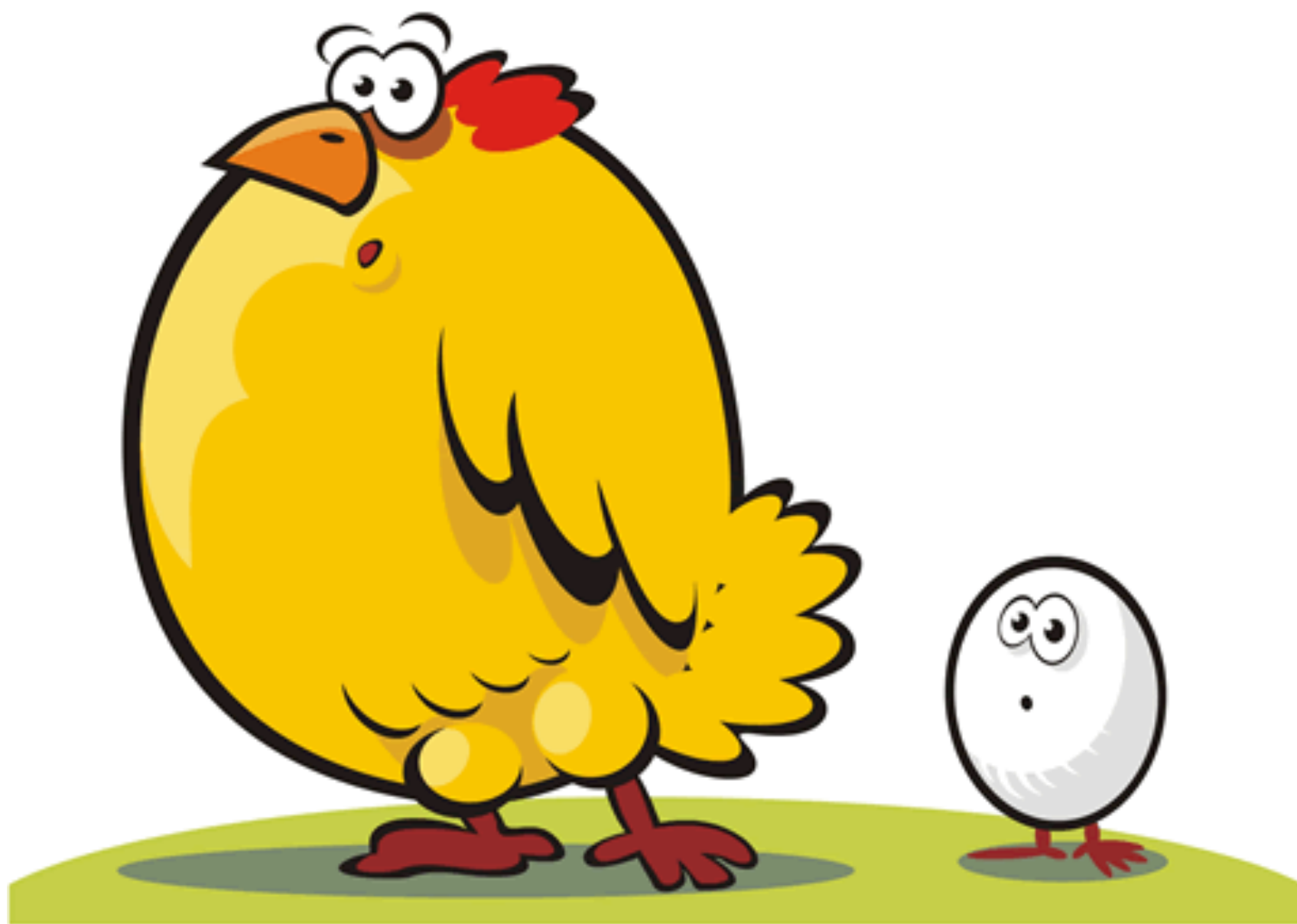
NHS Blood and Transplant/Serious Hazards of Transfusion

**Louise Sherliker**

*National Lead*

Patient Blood Management Practitioner Team

NHS Blood and Transplant



















## VTE Exemplar Centre Criteria

Checklist for organisations considering making an application to become a VTE Exemplar Centre



Tick	1.	<b>VTE STRATEGY</b>
	a.	Chief Executive agreement
	b.	Thrombosis committee/VTE Implementation group (or equivalent) established <ul style="list-style-type: none"> <li>• Cross organisation and multidisciplinary representation (organisational chart)</li> </ul>
	c.	VTE Guidance in place <ul style="list-style-type: none"> <li>• Clinicians</li> <li>• Maternity</li> <li>• Extended prophylaxis</li> </ul>

Tick	2.	<b>COMPLIANCE &amp; PROCESSES</b>
	a.	Risk assessment <ul style="list-style-type: none"> <li>• Risk assessment system(s) in place</li> <li>• Risk assessment tools utilised</li> <li>• Data demonstrating exceeding National Quality Requirement of 95% risk assessment for more than 3 consecutive months</li> </ul>
	b.	Root cause analysis <ul style="list-style-type: none"> <li>• Process and staff (flow chart demonstrating how RCA is undertaken &amp; how findings drive improvement)</li> </ul>
	c.	Audit <ul style="list-style-type: none"> <li>• Audit mechanisms in place and staff to support the process</li> <li>• % patients receiving appropriate thromboprophylaxis</li> <li>• % patients should receive written information on admission and discharge</li> </ul>
	d.	Reporting <ul style="list-style-type: none"> <li>• Clinical governance (trust)</li> <li>• Incident reporting</li> <li>• Use of league tables (by ward/directorate)</li> </ul>
	e.	Commissioning and contracts <ul style="list-style-type: none"> <li>• Inclusion of VTE in acute/community contract service specifications</li> <li>• Submission of RCA reports to commissioners</li> </ul>

Tick	3.	<b>TRAINING &amp; EDUCATION</b>
	a.	Evidence of staff having undertaken appropriate thromboprophylaxis training
	b.	Trust/hospital induction programmes includes VTE education <ul style="list-style-type: none"> <li>• New staff</li> <li>• Junior doctors</li> <li>• Nurses</li> </ul>
	c.	E-learning packages available for staff (e.g. King's/VTE Prevention England module)
	d.	Attendance at national learning events and forums

Tick	4.	<b>COMMUNICATIONS</b>
	a.	Staff <ul style="list-style-type: none"> <li>• VTE Communications strategy in place</li> <li>• Evidence of communications undertaken (e.g. campaigns, internal communication such as newsletters, intranet, league tables, use of social media e.g. Twitter)</li> </ul>
	b.	Patient (evidenced by audit) <ul style="list-style-type: none"> <li>• Written information is offered - Patient Information Leaflet</li> <li>• VTE is explained verbally to patients by appropriate member of staff</li> </ul>
	c.	Hospital patient group(s) are informed about VTE

## VTE Exemplar Centre Criteria

Checklist for organisations considering making an application to become a VTE Exemplar Centre

Tick	1.	VTE STRATEGY
	a.	Chief Executive agreement
	b.	Thrombosis committee/VTE Implementation group (or equivalent) established <ul style="list-style-type: none"> <li>• Cross organisation and multidisciplinary representation (organisational chart)</li> </ul>
	c.	VTE Guidance in place <ul style="list-style-type: none"> <li>• Clinicians</li> <li>• Maternity</li> <li>• Extended prophylaxis</li> </ul>

Tick	2.	COMPLIANCE & PROCESSES
	a.	Risk assessment <ul style="list-style-type: none"> <li>• Risk assessment system(s) in place</li> <li>• Risk assessment tools utilised</li> <li>• Data demonstrating exceeding National Quality Requirement of 95% risk assessment for more than 3 consecutive months</li> </ul>
	b.	Root cause analysis <ul style="list-style-type: none"> <li>• Process and staff (flow chart demonstrating how RCA is undertaken &amp; how findings drive improvement)</li> </ul>
	c.	Audit <ul style="list-style-type: none"> <li>• Audit mechanisms in place and staff to support the process</li> <li>• % patients receiving appropriate thromboprophylaxis</li> <li>• % patients should receive written information on admission and discharge</li> </ul>
	d.	Reporting <ul style="list-style-type: none"> <li>• Clinical governance (trust)</li> <li>• Incident reporting</li> <li>• Use of league tables (by ward/directorate)</li> </ul>
	e.	Commissioning and contracts <ul style="list-style-type: none"> <li>• Inclusion of VTE in acute/community contract service specifications</li> <li>• Submission of RCA reports to commissioners</li> </ul>

Tick	3.	TRAINING & EDUCATION
	a.	Evidence of staff having undertaken appropriate thromboprophylaxis training
	b.	Trust/hospital induction programmes includes VTE education <ul style="list-style-type: none"> <li>• New staff</li> <li>• Junior doctors</li> <li>• Nurses</li> </ul>
	c.	E-learning packages available for staff (e.g. King's/VTE Prevention England module)
	d.	Attendance at national learning events and forums

Tick	4.	COMMUNICATIONS
	a.	Staff <ul style="list-style-type: none"> <li>• VTE Communications strategy in place</li> <li>• Evidence of communications undertaken (e.g. campaigns, internal communication such as newsletters, intranet, league tables, use of social media e.g. Twitter)</li> </ul>
	b.	Patient (evidenced by audit) <ul style="list-style-type: none"> <li>• Written information is offered - Patient Information Leaflet</li> <li>• VTE is explained verbally to patients by appropriate member of staff</li> </ul>
	c.	Hospital patient group(s) are informed about VTE



# England





The Joint Commission

*Patient Blood Management Certification*

AABB and The Joint Commission have teamed up to offer Patient Blood Management Certification. Based on the [\*AABB Standards for a Patient Blood Management Program\*](#), this new voluntary hospital certification is open to Joint Commission accredited hospitals.

Missed the recent PBM webinar? Getting ready for PBM Certification? View the archived webinar and the presentation slides.

- [On-Demand Webinar](#)
- [Presentation Slides](#)

[Contact The Joint Commission](#) for more information about Certification.

**First PBM Certification in U.S. goes to D.C. Hospital – MedStar Georgetown University Hospital**

[Read the press release.](#) MedStar Georgetown University Hospital

President, Mike Sachtleben, congratulates the hospital's Patient Blood Management Team on achieving the nation's first blood management certification from The Joint Commission and AABB. [View on YouTube.](#)



**MedStar Georgetown  
University Hospital**

**Congratulations to  
MedStar Georgetown  
University Hospital!**

**The first hospital to successfully  
achieve Patient Blood  
Management Certification**



The Joint Commission

*Patient Blood Management Certification*





The Joint Commission

Patient Blood Management Certification

AABB and The Joint Commission have teamed up to offer Patient Blood Management Certification. Based on the [\*AABB Standards for a Patient Blood Management Program\*](#), this new voluntary hospital certification is open to Joint Commission accredited hospitals.

Missed the recent PBM webinar? Getting ready for PBM Certification? View the archived webinar and the presentation slides.

- [On-Demand Webinar](#)
- [Presentation Slides](#)

[Contact The Joint Commission](#) for more information about Certification.

**First PBM Certification in U.S. goes to D.C. Hospital – MedStar Georgetown University Hospital**

[Read the press release.](#) MedStar Georgetown University Hospital

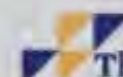
President, Mike Sachtleben, congratulates the hospital's Patient Blood Management Team on achieving the nation's first blood management certification from The Joint Commission and AABB. [View on YouTube.](#)



MedStar Georgetown  
University Hospital

**Congratulations to  
MedStar Georgetown  
University Hospital!**

**The first hospital to successfully  
achieve Patient Blood  
Management Certification**



The Joint Commission

Patient Blood Management Certification



# PATIENT BLOOD MANAGEMENT

PRE	<ul style="list-style-type: none"> <li>• Detect anemia</li> <li>• Identify underlying disorder(s) causing anemia</li> <li>• Manage disorder(s)</li> <li>• Refer for further evaluation if necessary</li> <li>• Treat suboptimal iron stores/iron deficiency/anemia of chronic disease/iron-restricted erythropoiesis</li> <li>• Treat other hematinic deficiencies</li> <li>• Note: Anemia is a contraindication for elective surgery</li> </ul>	<ul style="list-style-type: none"> <li>• Identify and manage bleeding risk</li> <li>• Minimize iatrogenic blood loss</li> <li>• Procedure planning and rehearsal</li> <li>• Preoperative autologous blood donation (in selected cases or when patient choice)</li> </ul>	<ul style="list-style-type: none"> <li>• Assess/optimize patient's physiological reserve and risk factors</li> <li>• Compare estimated blood loss with patient-specific tolerable blood loss</li> <li>• Formulate patient-specific management plan using appropriate blood conservation modalities to minimize blood loss, optimize red cell mass and manage anemia</li> <li>• Restrictive transfusion thresholds</li> </ul>
INTRA	<ul style="list-style-type: none"> <li>• Timing surgery with hemotological optimization</li> </ul>	<ul style="list-style-type: none"> <li>• Meticulous hemostasis and surgical techniques</li> <li>• Blood-sparing surgical techniques</li> <li>• Anesthetic blood conserving strategies</li> <li>• Autologous blood options</li> <li>• Pharmacological/hemostatic agents</li> </ul>	<ul style="list-style-type: none"> <li>• Optimize cardiac output</li> <li>• Optimize ventilation and oxygenation</li> <li>• Restrictive transfusion thresholds</li> </ul>
POST	<ul style="list-style-type: none"> <li>• Stimulate erythropoiesis</li> <li>• Be aware of drug interactions that can increase anemia</li> </ul>	<ul style="list-style-type: none"> <li>• Vigilant monitoring and management of postoperative bleeding</li> <li>• Avoid secondary hemorrhage</li> <li>• Rapid warming/maintain normothermia (unless hypothermia specifically indicated)</li> <li>• Autologous blood salvage</li> <li>• Minimize iatrogenic blood loss</li> <li>• Hemostasis/anticoagulation mgmt</li> <li>• Prophylaxis of upper GI hemorrhage</li> <li>• Avoid/treat infections properly</li> <li>• Be aware of adverse effects of medication</li> </ul>	<ul style="list-style-type: none"> <li>• Optimize anemia reserve</li> <li>• Maximize oxygen delivery</li> <li>• Minimize oxygen consumption</li> <li>• Avoid/treat infections promptly</li> <li>• Restrictive transfusion thresholds</li> </ul>

Multidisciplinary multimodal team approach

Where are we now?

# Where are we now?

PBM self-assessment group has been formed

# Where are we now?

PBM self-assessment group has been formed

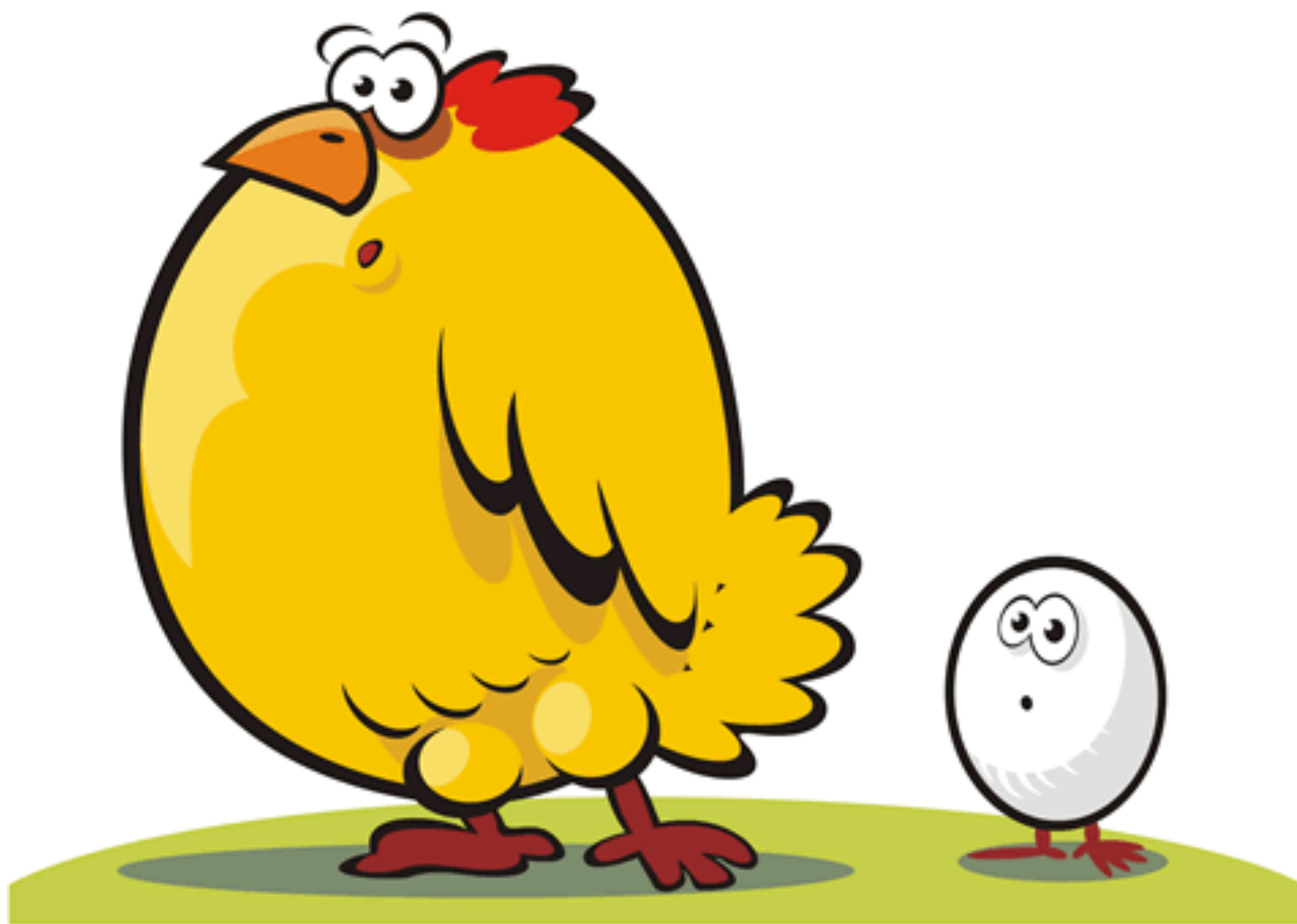
Planning for self-assessment (at least initially)













Royal College  
of Physicians

National Comparative Audit  
of Blood Transfusion



*Blood and Transplant*



Royal College  
of Physicians

National Comparative Audit  
of Blood Transfusion



*Blood and Transplant*





Royal College  
of Physicians

National Comparative Audit  
of Blood Transfusion



*Blood and Transplant*





Royal College  
of Physicians

National Comparative Audit  
of Blood Transfusion



*Blood and Transplant*





# PBM Accreditation

# PBM Accreditation

Do we want it?



# PBM Accreditation

Do we need it?









