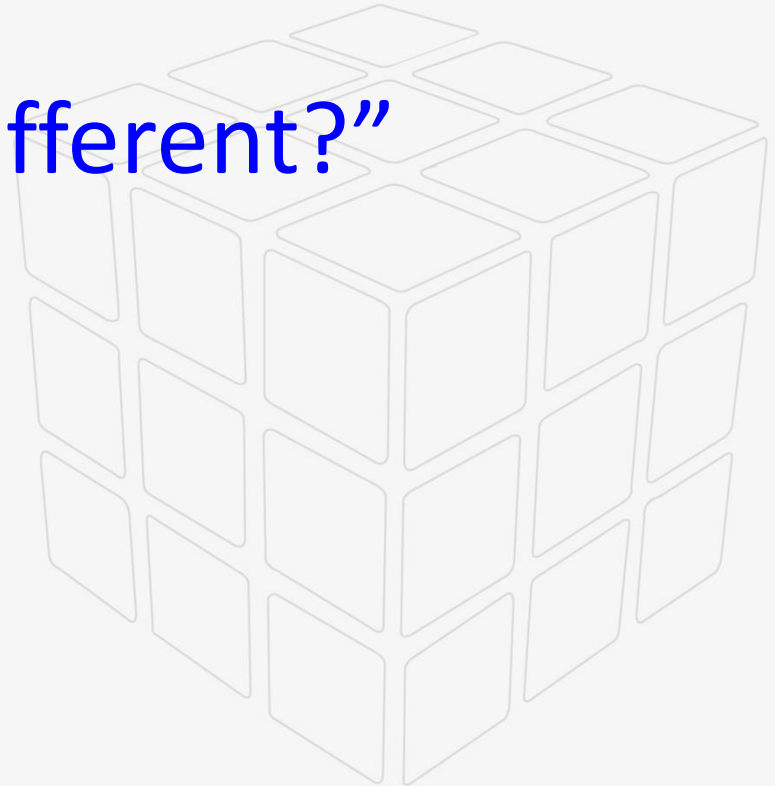




“Good, Bad or just different?”

BioRad

Tracey Tomlinson
Head of Laboratory
RCI Colindale, NHSBT





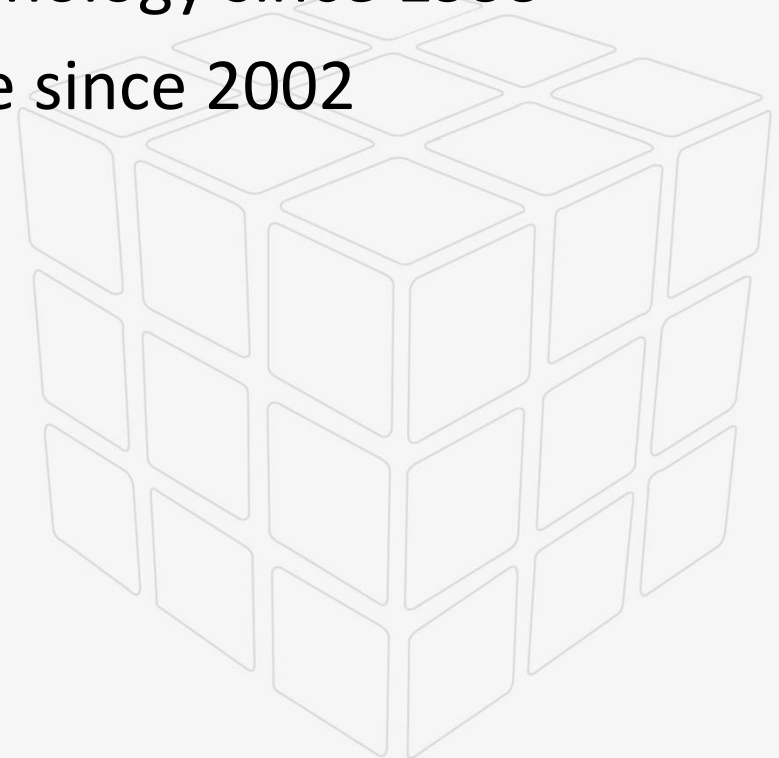
Disclaimer

- This presentation is based on my opinions and observations
- I have raised a number of the 'problems' with BioRad previously
- My aim is to give a review of the BioRad technology not to promote any one system over another



Background

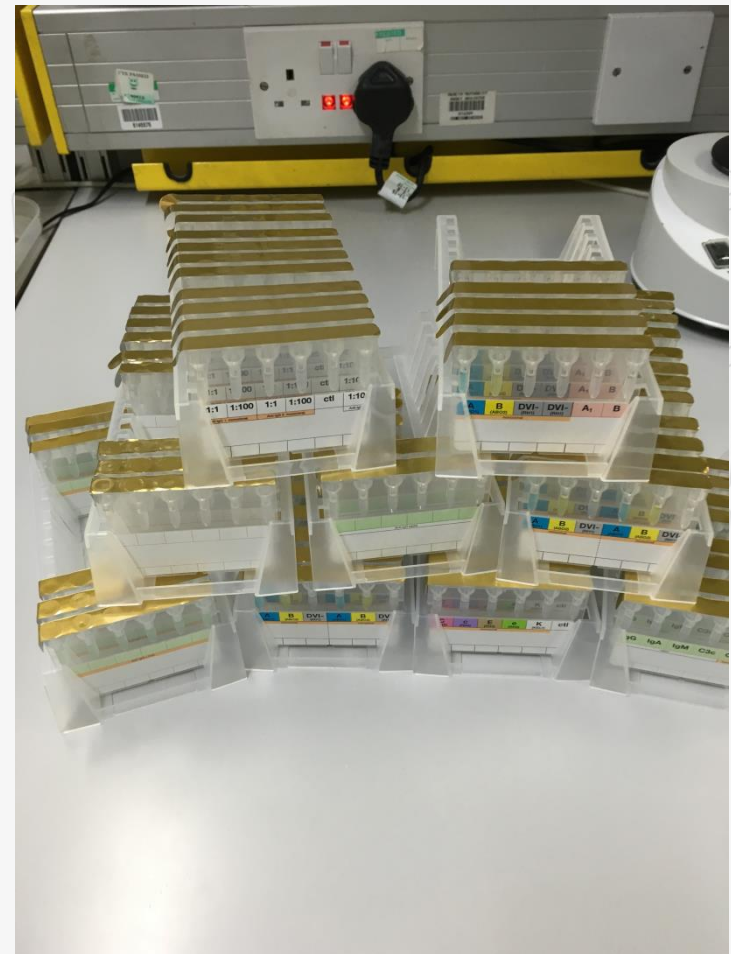
- I have used the BioRad technology since 1999
- Used as front line technique since 2002
- Other technologies
 - Tubes
 - Solid phase technologies
 - Manual microplate
 - Capture
 - Column technologies
 - Biovue
 - Biorad





BioRad Cards

- Card containing 6 microtubes
- Each microtube contains dextran acrylamide gel
- The gel can be left neutral or impregnated with reagents
- Multiple reagent cards available





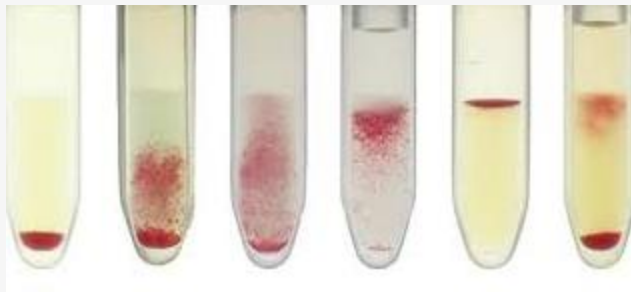
The Good



- Easy to store
 - 18 to 25°C
- Robust
- Can be used manually or automated
- Widely used throughout the UK
- Reliable and repeatable



The Good

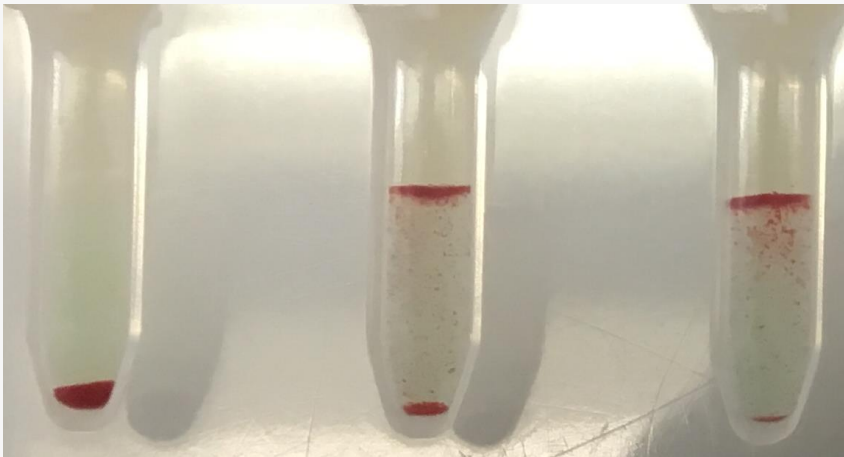


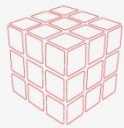
- Easy to use
- Does not require washing
- Easy to read
- Results stable
 - Reaction remain trapped in gel



The Good

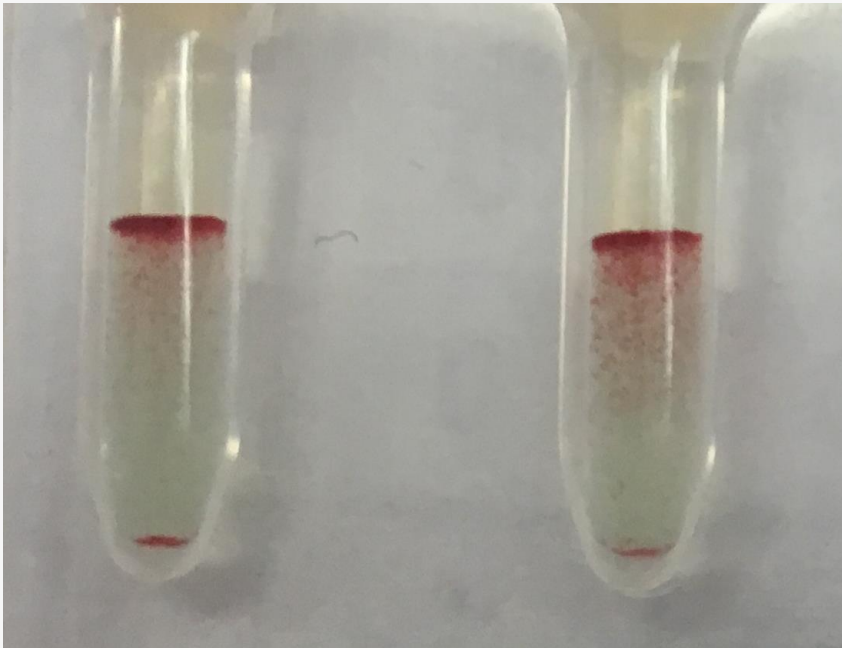
- Sensitive
- Extremely good for detecting mixed field reactions

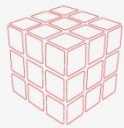




The bad

- Interference
 - Fibrin
 - Cold agglutinins
 - Waldenström's macroglobulinaemia
 - BioRad dependent antibodies

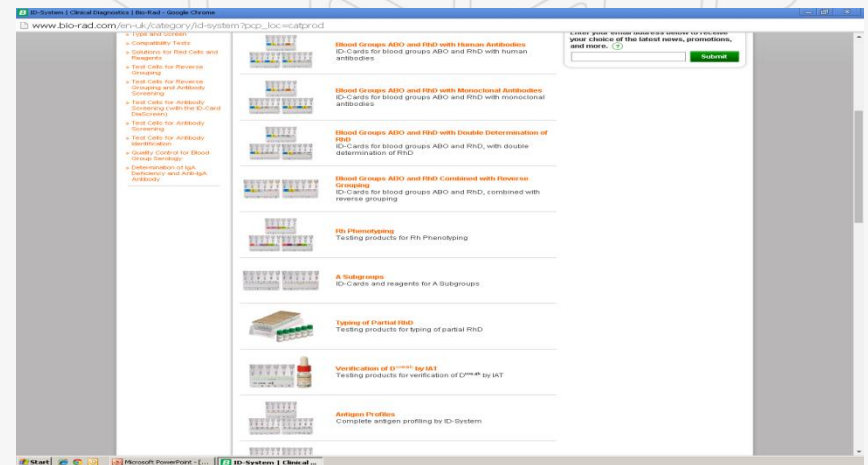
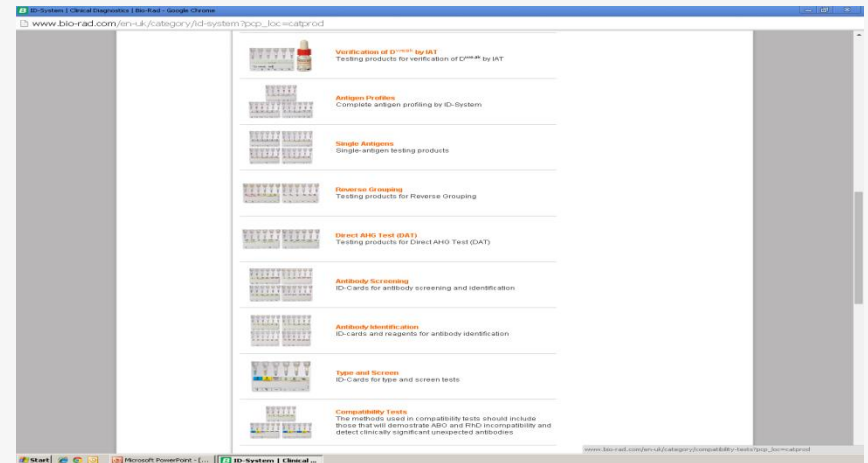
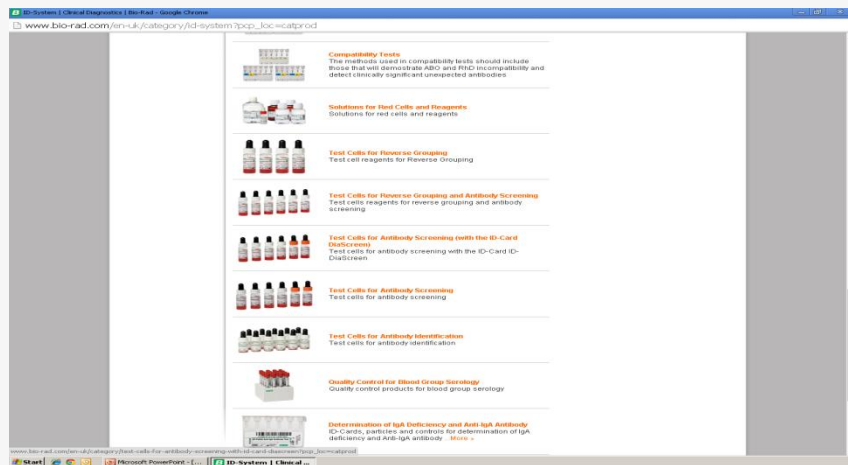




BBTS Annual
Conference 2016

The reagents

- Huge range of different products available



BBTS Annual Conference 2016

21st - 23rd September



The good



- Wide range of panels available
- Ability to use panels produced by other suppliers
- The ability to resuspend any red cell and use in test



The bad



- Bga positive cells!!





Automation

- IH-1000
 - High through put
 - Walk away
- IH-500
 - Compact bench top
- Gel Station
- Stand alone dispensers
- Stand alone readers





The good



- High throughput
- Easy to use
- Good images
- Sensitivity of camera



The bad



- Shut down process
- Reactivity of software
- Sensitivity of camera
 - Over sensitive?
 - Under sensitive?



Conclusion

- Good?
- Bad?
- Just different

