



BBTS Annual
Conference 2016

NHS

Blood and Transplant



#TransfusionIn3Words

1. massive
2. transfusion
3. protocol

#hellomynameisRoss @ffolliet 04/08/2016

Catch me at the #BBTS2016 conference in
Harrogate. #transfusionin3words

bbts.org.uk/blog/bbts2016



@KatePendry

@BritishBloodTS

#BBTS2016

BBTS Annual Conference 2016

21st - 23rd September



The North West Regional audit of the management of trauma- associated major haemorrhage

September 2016

Dr Dawn Swan

**Haematology SpR, formally North West
Deanery ST4 in affiliation with NHSBT**

**Dr Kate Pendry Consultant
Haematologist NW RTC**

Major Trauma Centres



April 2012

Adult and Children's Major Trauma Centres

- 1 Addenbrooke's Hospital Cambridge
- 2 Frenchay Hospital Bristol
- 3 James Cook University Hospital Middlesbrough
- 4 John Radcliffe Hospital Oxford
- 5 King's College Hospital London
- 6 Leeds General Infirmary
- 7 Queen's Medical Centre Nottingham
- 8 Royal London Hospital
- 9 Royal Victoria Infirmary Newcastle
- 10 St Mary's Hospital London
- 11 St George's Hospital London
- 12 Southampton General Hospital

Adult Major Trauma Centres

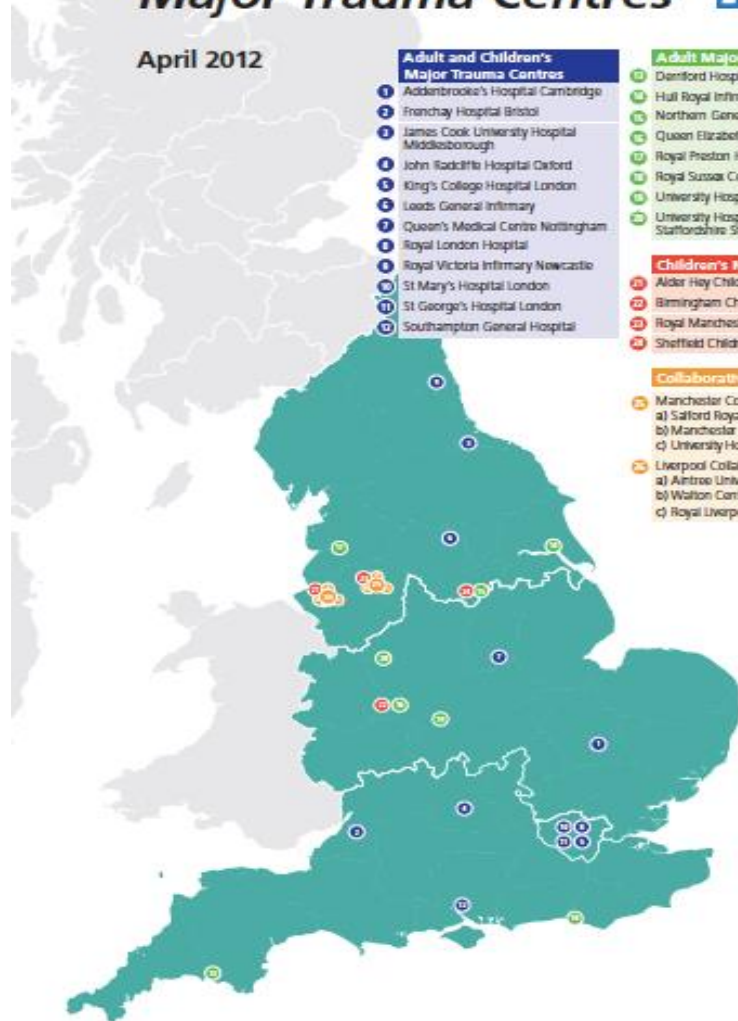
- 13 Derriford Hospital Plymouth
- 14 Hull Royal Infirmary
- 15 Northern General Hospital Sheffield
- 16 Queen Elizabeth Hospital Birmingham
- 17 Royal Preston Hospital
- 18 Royal Sussex County Hospital Brighton
- 19 University Hospital Coventry
- 20 University Hospital of North Staffordshire Stoke on Trent

Children's MTCs

- 21 Alder Hey Children's Hospital Liverpool
- 22 Birmingham Children's Hospital
- 23 Royal Manchester Children's Hospital
- 24 Sheffield Children's Hospital

Collaborative

- 25 Manchester Collaborative MTC
 - a) Salford Royal NHS Trust
 - b) Manchester Royal Infirmary
 - c) University Hospital South Manchester
- 26 Liverpool Collaborative MTC
 - a) Aintree University Hospital
 - b) Walton Centre
 - c) Royal Liverpool University Hospital



Blood and Transplant

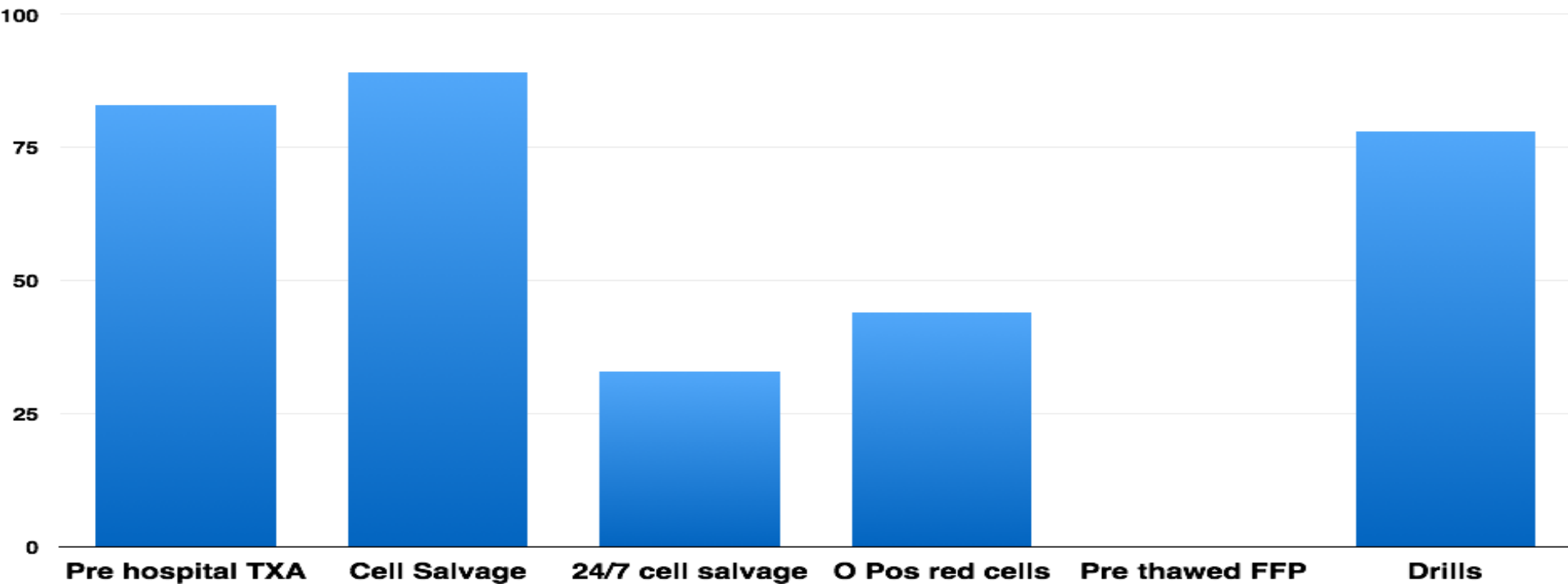


Organisational Audit

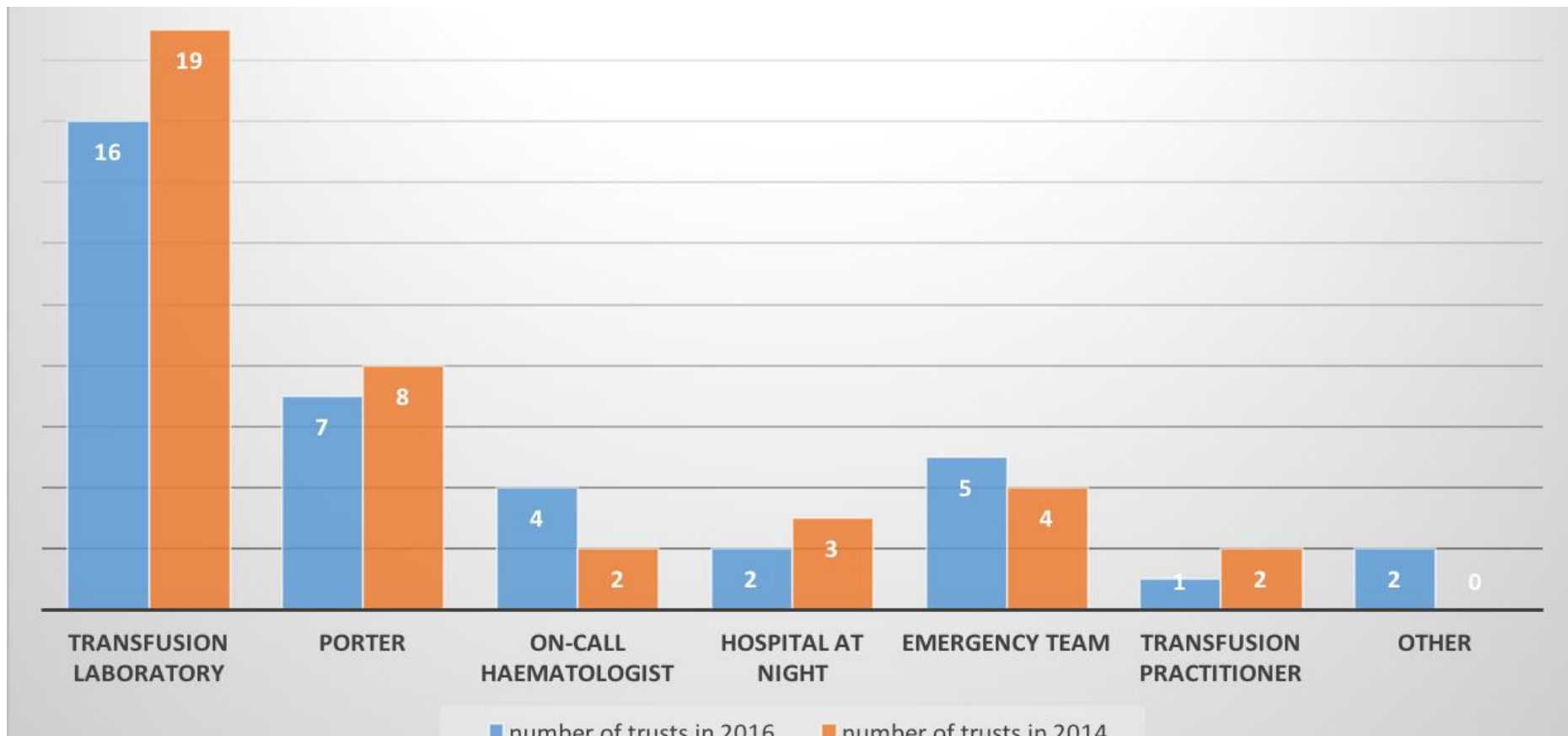
Case based Audit

Organisational Audit

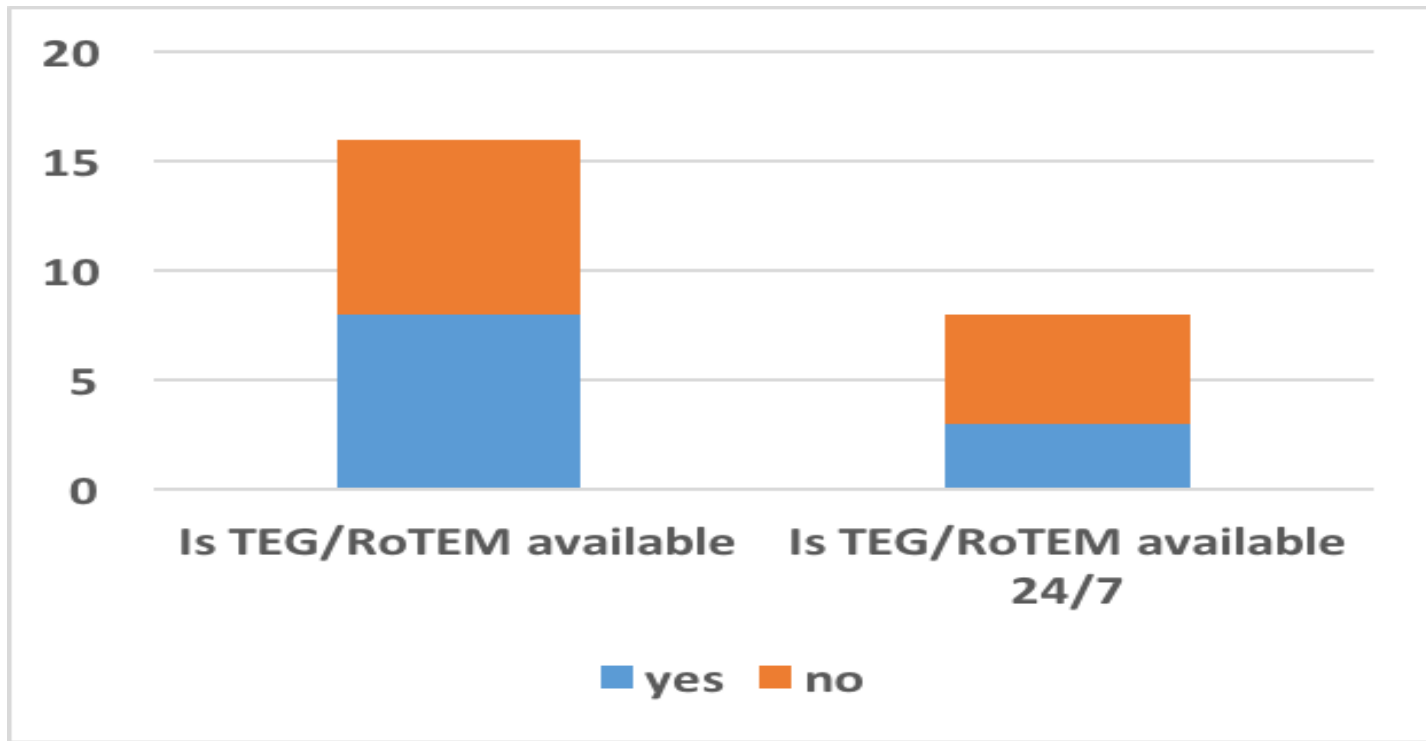
18 responses (100%)



Who you gonna call?



Point of care testing



Major haemorrhage packs

1st pack:

- 4 units red cells in 81%, 6 units red cells in 19%
- 4 units FFP in 100%
- 1 adult dose of platelets in 13%

2nd pack:

- 4 units red cells in 81%, 6 units in 13%
- 4 units FFP in 94%
- 1 adult dose platelets in 94%
- 2 packs of cryo in 25%

Pre-thawed FFP

Everyone aware of availability from April 2016

Only 3 plan to stock pre thawed FFP

64

cases



32%

received > 2
units O Neg
before Group
specific



wi

50% sample in lab
within 15 mins

54% group specific red
cells within 30 mins

46% FFP dispatched
within 45 mins



11% FFP

6% platelets

5% red cells

0% O Neg red cells

0% cryoppt

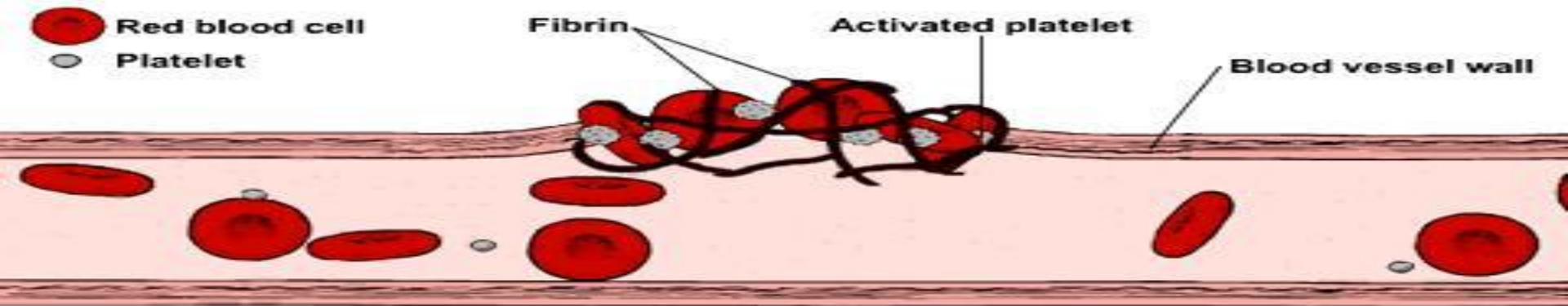




84%

72% fibrinogen checked

19% TEG / ROTEM



THE NEW YORK TIMES BESTSELLER

THE **CHECKLIST** MANIFESTO

HOW TO GET THINGS RIGHT

PICADOR

ATUL GAWANDE

BESTSELLING AUTHOR OF *BETTER* AND *COMPLICATIONS*

Improvement required

Update Regional MH
toolkit

Develop MH checklist

Simulation training



00:07