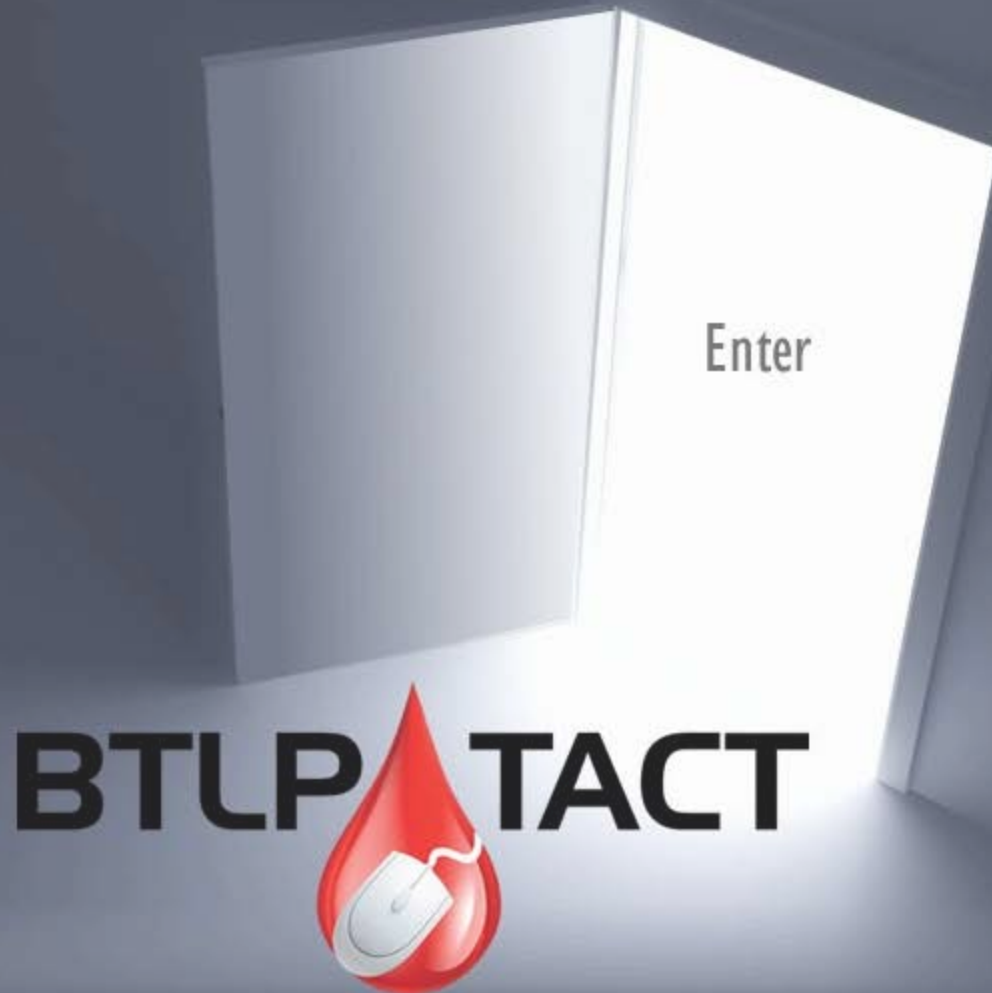


Training Assessment and Competency Tool (TACT)

Benchmarking Data

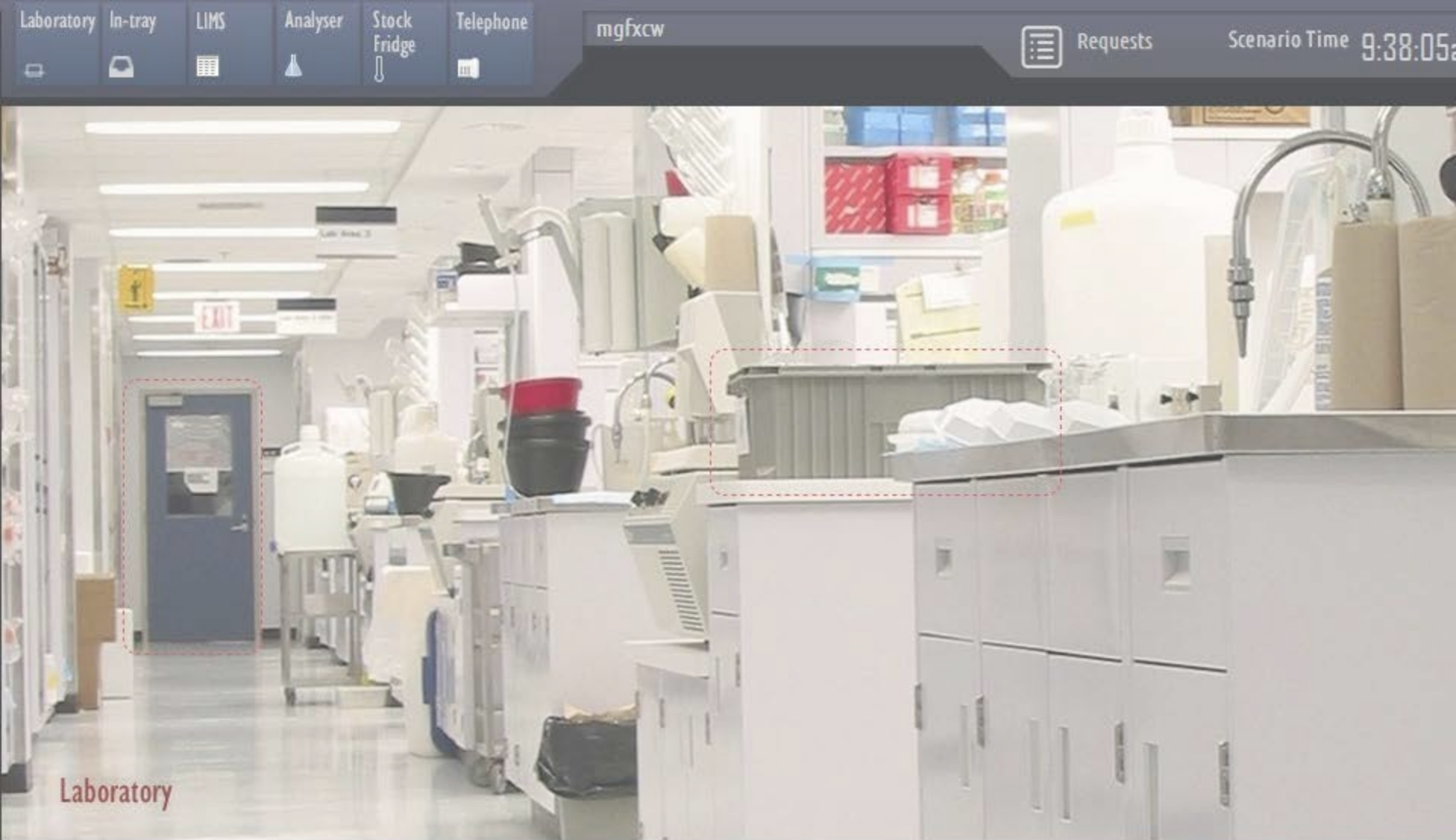
Claire Whitham / Jenny White



Introduction

- Developed by UK NEQAS with Certus Technology Associates
- Assesses knowledge based competency
- Complementary to local practical competency assessment
- Launched 2014
- Now reaching almost 30% of transfusion BMSs

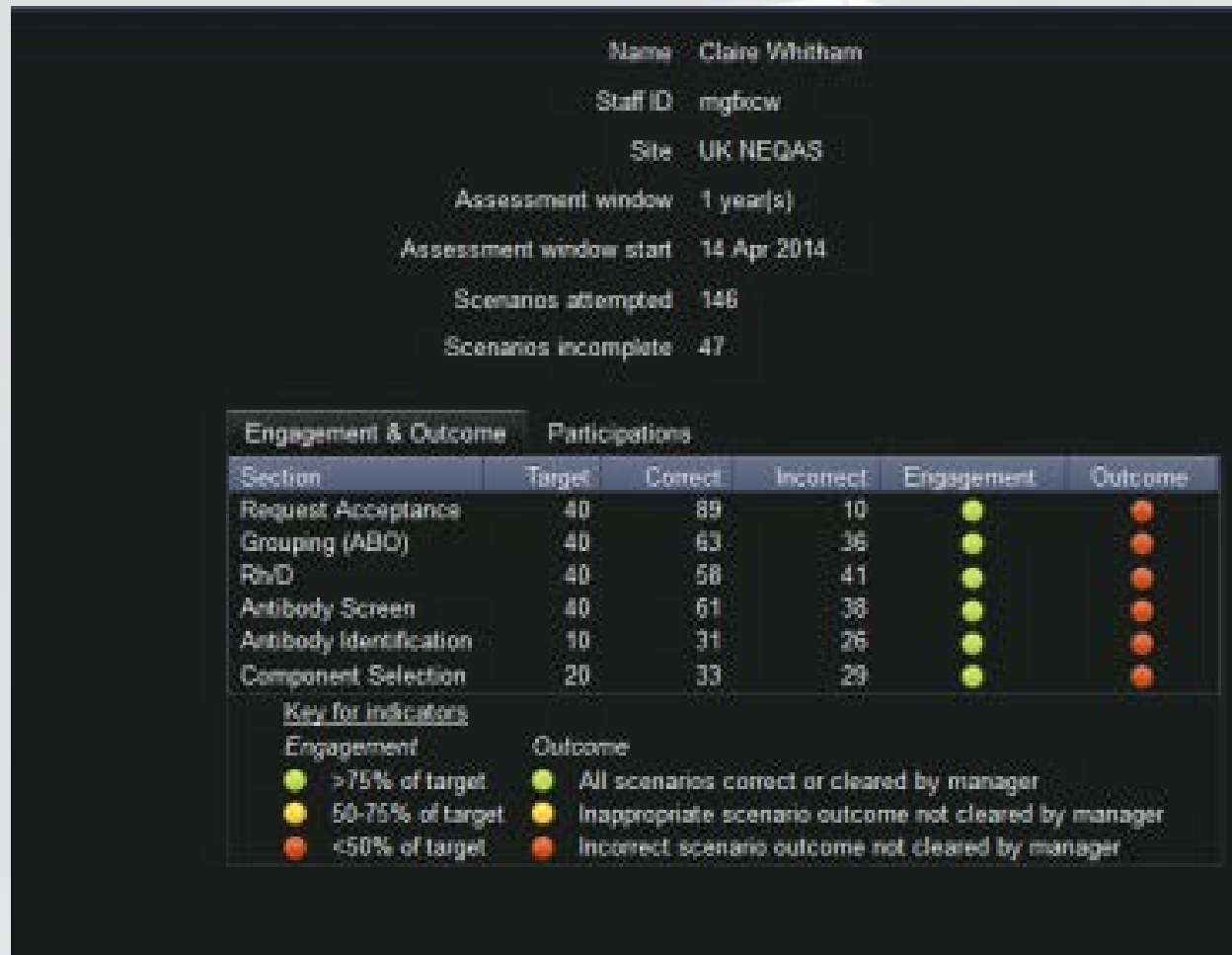




The TACT virtual laboratory – open all hours!

On-line pre-transfusion testing scenario with controlled random generation of 'cases' - assessment based on BSH guidance

TACT data – Members' summary



TACT data - Managers' overview

					Site		UK NEQAS									
					Assessment window		1 year(s)									
					Engagement						Outcome					
			Attempted	Incomplete	Request Acceptance	Grouping (ABO)	Rh/D	Antibody Screen	Antibody Identification	Component Selection	Request Acceptance	Grouping (ABO)	Rh/D	Antibody Screen	Antibody Identification	Component Selection
Member	Start Date	Latest														
Mr Arnold Mavurayi	14 Apr 2014		0	0	●	●	●	●	●	●	●	●	●	●	●	●
Mrs Jenny White	14 Apr 2014		0	0	●	●	●	●	●	●	●	●	●	●	●	●
Claire Whitham	14 Apr 2014	12 Apr 2015	146	47	●	●	●	●	●	●	●	●	●	●	●	●
<u>Key for indicators</u>																
<i>Engagement</i>																
<i>Outcome</i>																
● >75% of target																
● 50-75% of target																
● <50% of target																
● All scenarios correct or cleared by manager																
● Inappropriate scenario outcome not cleared by manager																
● Incorrect scenario outcome not cleared by manager																

Benchmarking

- UK NEQAS cannot see data on named individuals or sites, but interested in using overall data to see...
 - Level and patterns of engagement with TACT and the overall error rate in participations
 - Comparison of TACT errors with EQA and SHOT data
 - Areas where training may be required at a national level

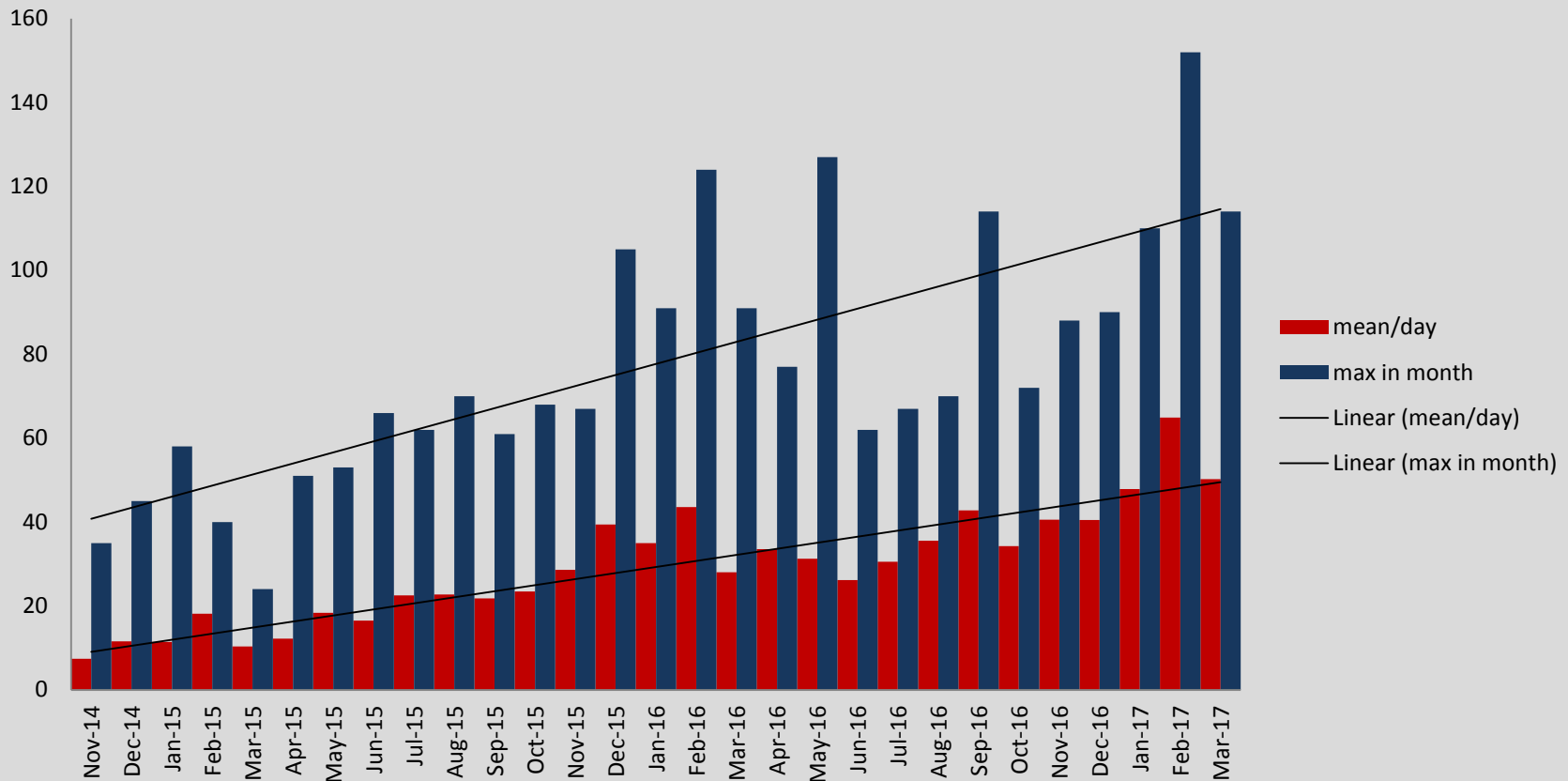


Method

- Certus extracted data on all participations undertaken between 01/04/2015 and 31/03/2017
- This was used to determine
 - Number of participations started
 - Time of day for engagement
 - How many participations included an error
 - How many participations were reviewed by the manager

TACT participation 2014-2017

Between 01/04/2015 and 30/09/2015, the ratio of participations to active members was 4:1; rising to 11:1 for the period 01/10/2016 to 31/03/2017.



25952 participations completed

22120 (85.2%)

'core' hours (08:00 to 20:00)

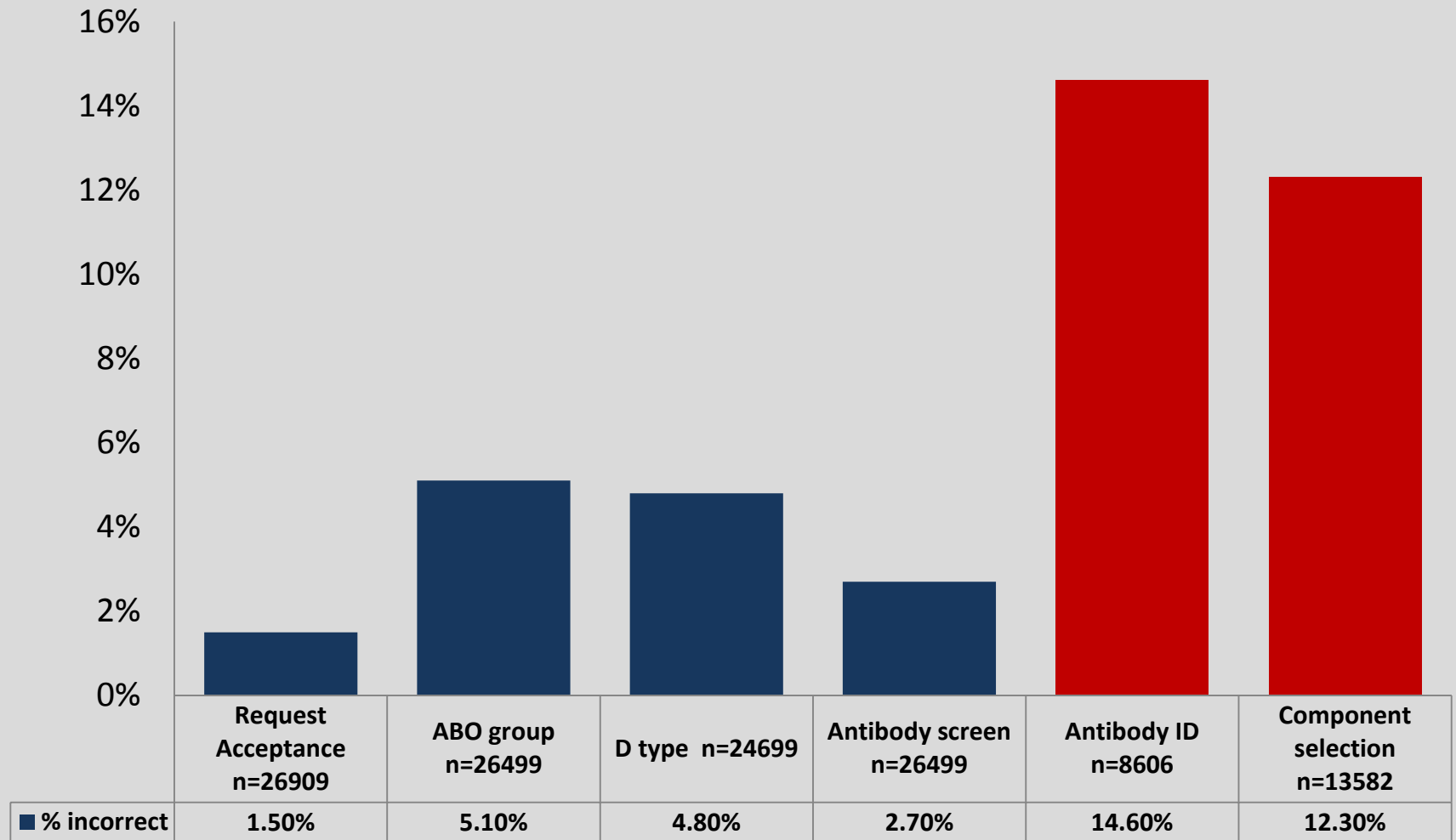
3832 (14.8%)

'out-of-hours'.



Peak times for participations were 14:00 and 11:00

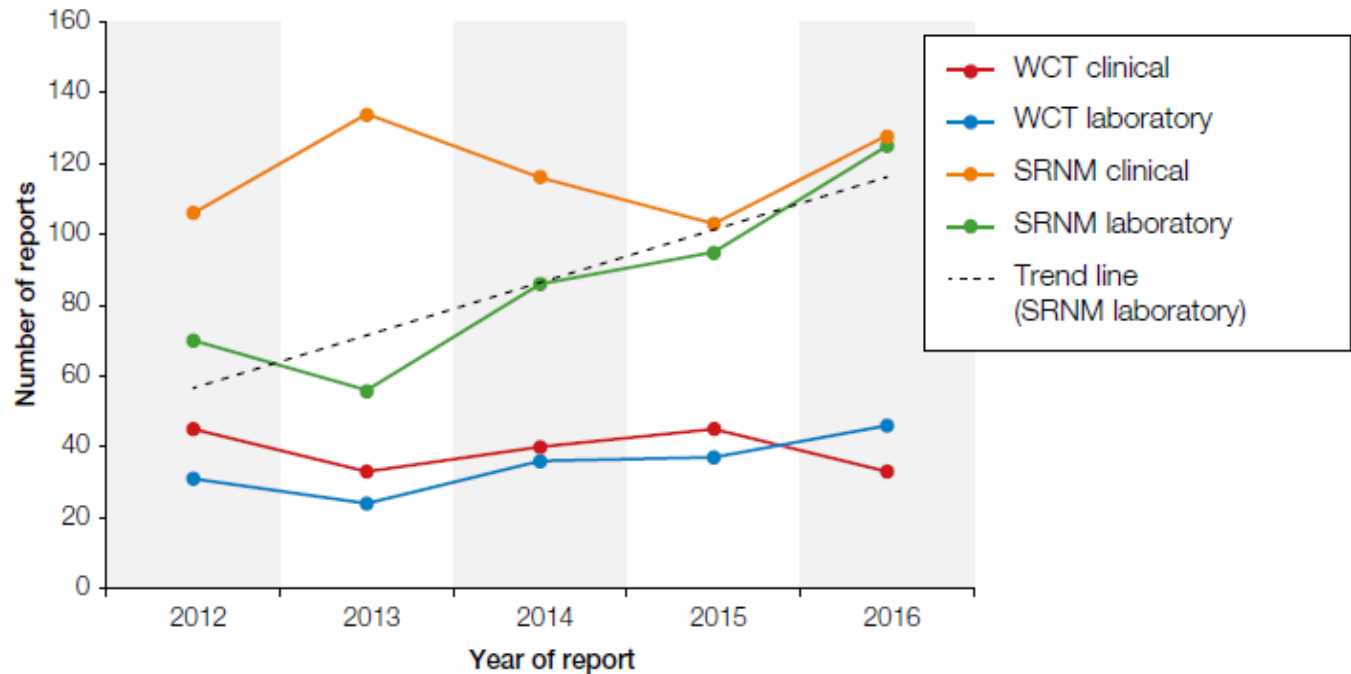
Error rates by test



SHOT report 2016

IBCT Chapter Key Messages.... ‘There has been a striking increase in laboratory errors over time resulting in specific requirements not met’

Figure 10.1b:
Incorrect blood
component
transfused 2012 to
2016



Antibody identification - EQA

- 39 antibody ID errors due to misinterpretation in the last 6 UK NEQAS (BTLP) exercises that included antibody mixtures (error rate 1.4%)
- EQA learning points consistently include processes for positive identification and exclusion of clinically significant antibodies



Potential reasons for error

- Unfamiliarity with the system?
- Local variation in policy?



Managers' review

- 1108/19877 (5.6%) participations were reviewed by a manager, and outcomes may have been changed
- Opportunity for understanding knowledge gaps and individual training needs

The screenshot displays a software interface for reviewing laboratory requests. On the left, a list of requests is shown with columns for 'Laboratory' and 'Scenario continued'. The central part of the interface features a review form for 'Request 60920', 'Request 69954', and 'Request 34232'. The form prompts the user to 'Select the appropriate outcome for each section of this scenario following review:'. The sections and their current outcomes are:

Section	Old	New
Request Acceptance	No Change	
Grouping (ABO)	No Change	
Rh/D	No Change	
Antibody Screen	No Change	
Antibody Identification	No Change	

At the bottom right of the form are 'Save' and 'Cancel' buttons. On the right side of the interface, a timeline is visible with timestamps ranging from 00:00:01 to 00:02:12. The background of the interface is dark grey.

Potential reasons for error

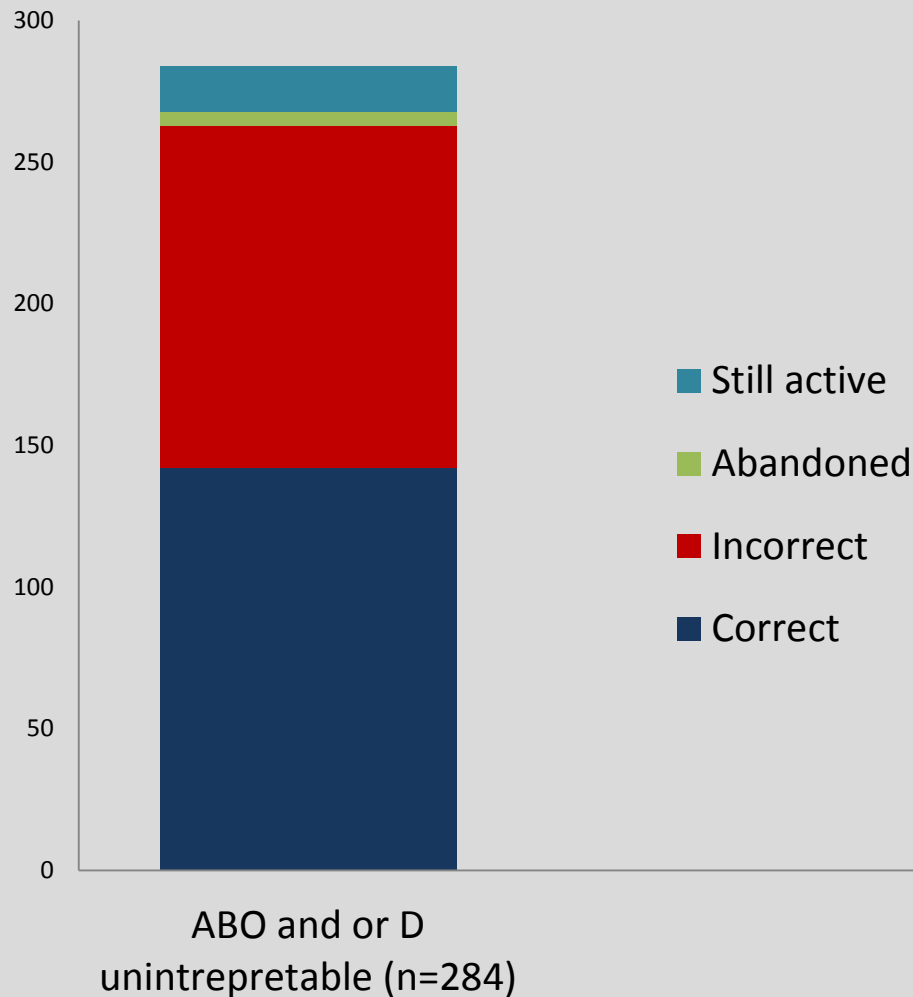
- Lack of background knowledge?
- Complexity of 'case' presented?



Complex 'flag'

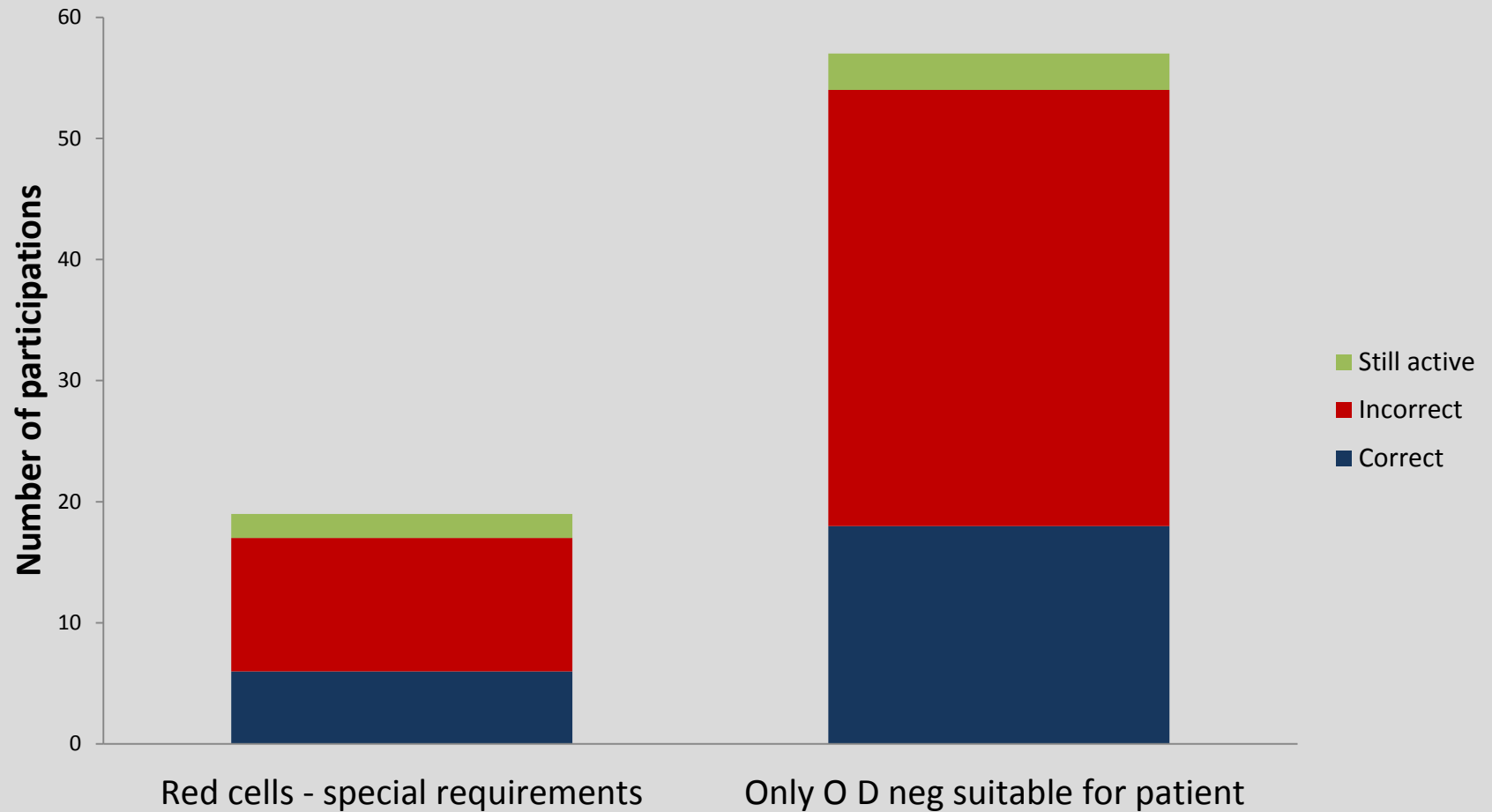
- Introduced 2017
- ABO/D
 - MF reaction(s)
 - Weak reaction(s) vs. anti-A, anti-B or anti-D
 - Positive reagent control
- Selection of blood
 - Red cells with 'special requirements'
 - Only O D negative blood is suitable

Outcomes of complex participations ABO/D



258/3341 (7.7%) non-complex participations had an ABO/D error compared to 121/268 (45.1%) for complex ABO/D

Outcome of 'complex' participations selection of blood



Conclusions

- TACT engagement has increased over the two years that the system has been live
- Highest error rate in antibody identification, component selection, and complex ABO/D typing
- A majority of participations are undertaken during core hours, but members are using the system 24/7
- Managers are reviewing individual participations with staff

Coming soon...

- 'Wipe the dashboard' feature
- File a request when it is completed
- Redesign of the request form
- **Re-engineering of the system**
- Second sample
- Crossmatching and electronic issue



Acknowledgements



- Certus Technology Associates
- TACT advisory group
- All the members!
- UK NEQAS (BTLP) team, especially Claire!

